

BERMUDA L.F. WADE INTERNATIONAL AIRPORT
COVID 19 PREVENTION MEASURES FOR PASSENGERS

ON DEPARTURE



CURBSIDE DROP OFF

- Wear face masks while inside the terminal.



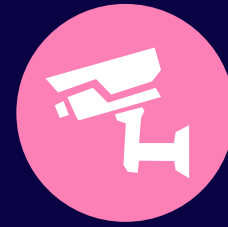
CHECK IN

- Minimize face-to-face contact with airline agents by checking in online or by using the self-check-in counters.
- Use hand sanitizer stations prior to using kiosks.
- Processing by Airline Agents to take place behind plexiglass shields at the airline check-in counters
- Follow physical distancing markers in place to ensure safe queuing
- Wear face masks while inside the terminal



US PRE-CLEARANCE

- Passengers enrolled in the Global Entry program are encouraged to use the designated self check-in kiosks.
- Follow physical distancing markers in place to ensure safe queuing.
- Processing by CBP agents to take place behind plexiglass shields.



SECURITY

- Security bins to be disinfected and available for placement of personal belongings
- Follow physical distancing markers in place to ensure safe queuing
- Elevator usage limited to a maximum of two persons at any one time.



DEPARTURES LOUNGE

- Physical distancing markers in place to ensure safe seating.
- Children's Play Pen and Book Zones have been removed.
- Restaurants providing grab & go items for sale.
- Cashless transactions are strongly encouraged at restaurants and shops.



BOARDING

- Avoid clustering at the boarding gates by queuing only in designated areas.
- Remain seated until your group number is called.
- Readily display travel documents at the checkpoints to help minimize the need for agents to handle them.
- Follow physical distancing markers to ensure safe queuing

ON ARRIVAL



DEPLANING

- Wear face masks when deplaning and when inside the terminal.



IMMIGRATION

- Follow Physical distancing markers that have been placed to ensure safe queuing
- Use hand sanitizer stations located throughout the terminal.
- Processing at the Immigration counters will take place behind Plexiglass shields.



DUTY FREE

- Cashless transactions are strongly encouraged when in the Duty Free Shop.



BAGGAGE CLAIM

- Follow Physical distancing markers that have been placed to ensure safe queuing



CUSTOMS

- Returning residents are strongly encouraged to make cashless transactions when making duty payments.
- Follow Physical distancing markers that have been placed to ensure safe queuing



GROUND TRANSPORT

- Persons meeting arriving passengers will be asked to do so outdoors as the indoor meet and greet area will be closed.
- Those with pre-arranged transportation will be directed by Traffic Officers to their waiting drivers.